

FLOAT SWITCH



- CB-2005** 5mtr neoprene cable
- CB-2010** 10mtr neoprene cable
- CB-2020** 20mtr neoprene cable

Other lengths available on indent

FLOAT SWITCH

- No mercury: controlled by electromechanical principle.
- Reversible contact: allows control with lower and upper level.
- Type of interruption: micro-disconnection.
- Degree of Protection: IPX8.
- Electrical capacity: 10(4)A 250V~.
- Operation temperature: Maximum of 60°C.

SPECIFICATIONS

The drawing opposite indicates how the counterweight should be fixed.

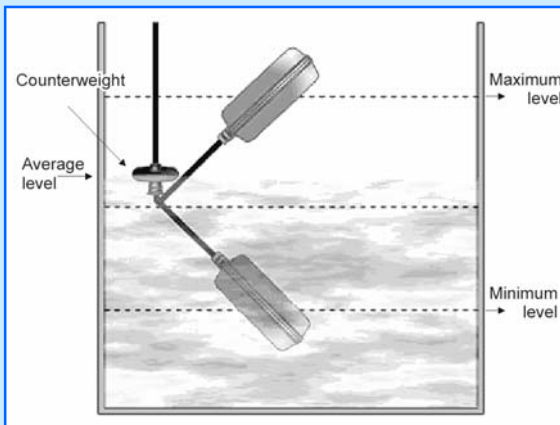
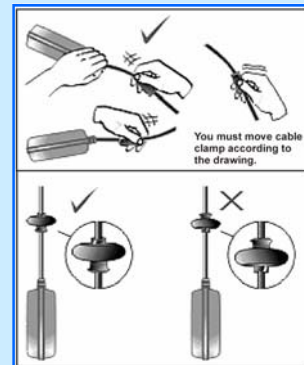
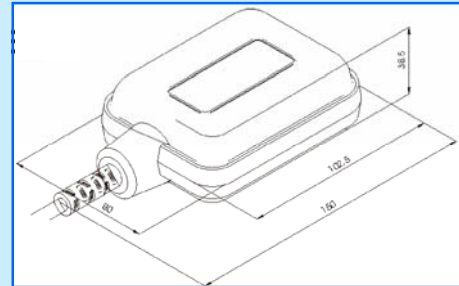
To increase the differential between the maximum or minimum level, increase the cable distance between the float and the counterweight.

It is not advisable to use this float switch in flammable liquids.

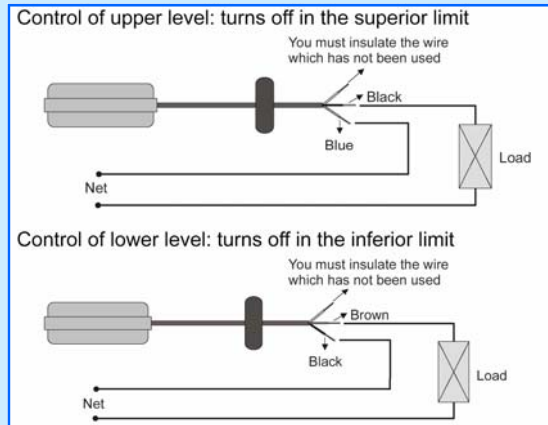
Do not make connections where contact with the liquid is possible.

Fasten the float cable to the edge or to the upper side of the tank.

DIMENSIONS



UTILISATION



WIRING

TOBIN ELECTRICAL COMPONENTS PTY. LTD.

2C Brunner Road Chullora NSW 2190
Phone 02 8713 5200 Fax 02 9790 5211

www.tobins.com.au