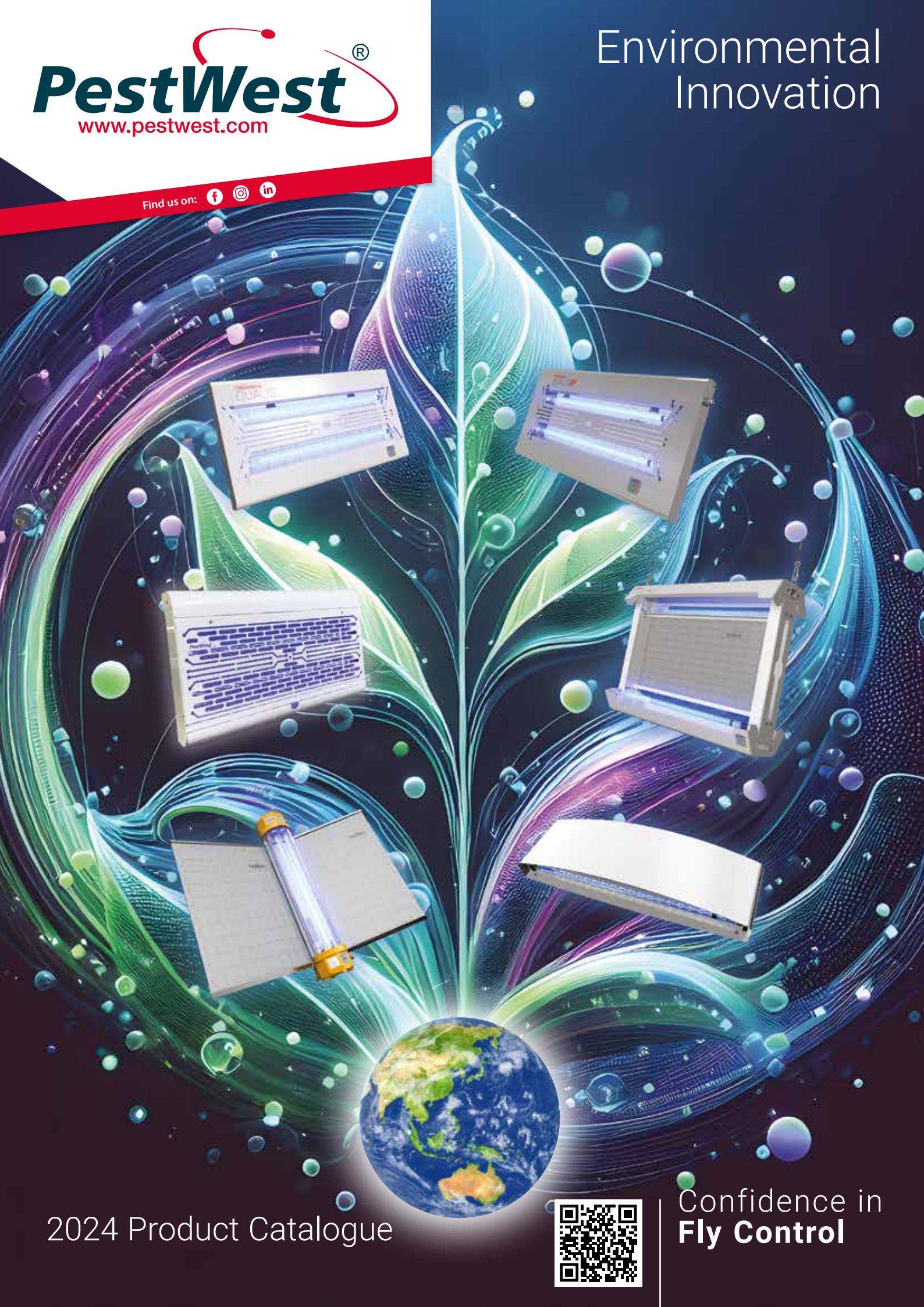


Find us on:   



THE NEW LED RANGE

The Quantum® X technology delivers 360° of unrivalled fly attracting UV LED light

- Lower environmental impact
- 3 year tube lifespan
- Zero mercury content

QUANTUM®
LED

Chameleon® Qualis & Qualis *IP*



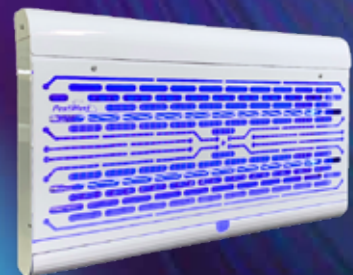
Chameleon® Sirius X



Chameleon® EXG X



Interceptor



For more information, please scan the QR code or visit our website:
www.pestwest.com.au

Confidence in
Fly Control

QBL LED

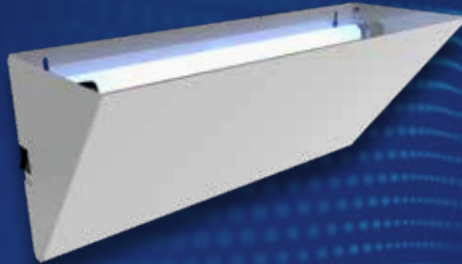
Retrofit Technology

Upgrade PestWest® fly control units & embrace UVA led technology!

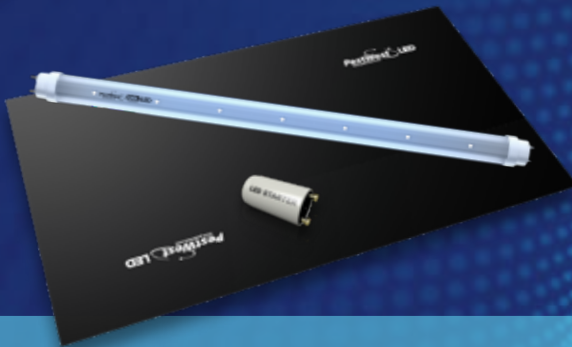


Why throw away recent purchases when you can upgrade?

Our leading Chameleon® traps with fluorescent tubes can be transformed into LED units to provide significant savings in electricity, lower the environmental impact and improve the management of energy usage.



Engineered to work effectively with the Chameleon® 1x2, 2x2 and Uplight models.



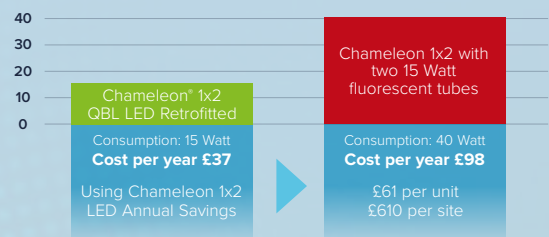
The transformation is simple:

A straightforward switch of the fluorescent tubes, the starters and the glue boards, with PestWest QBL LED retrofit tubes, LED starters and LED optimised glue boards.

The upgraded unit will offer all the main advantages of LED technology.

- Mercury free
- Environmentally sustainable
- 3-year tube lifespan
- Low power consumption

Comparison of power consumption in Watts



* Calculated with an average cost of electricity of 28p per kWh and 10 units per site.

For more information, please scan the QR code or visit our website:
www.pestwest.com.au

Confidence in
Fly Control

Find us on:



LED Units

	Quantum® X LED Units	06 - 13
	QBL Retrofit X LED Units	14 - 16

UV Sticky Traps

	Professional Sticky Traps	17 - 23
	Decorative Sticky Traps	24 - 27

Electronic Fly Killers

	Professional Electronic Fly Killers	28 - 34
	Outdoor Electronic Fly Killers	35 - 40

Specialist Units

	Specialist Range	41 - 45
---	------------------	---------

Ancillary Products & Quick View

	Ancillary Products	45 - 46
	Customisation	47
	Hints & Tips	48 - 49
	Quick View Products	52

About Us

Find us on:



Welcome to PestWest Australia – Your Trusted Partner in Flying Insect Control Solutions!

Who We Are

At PestWest Australia, we understand the challenges that flying insects pose to homes, businesses, and communities.

That's why we are dedicated to providing cutting-edge, effective, and environmentally responsible pest control solutions. With over 50 years of experience in the industry, we have emerged as a leading authority in pest management across the globe.

Our Mission

Our mission is simple but powerful: To safeguard homes, businesses, and the environment from the threats posed by flying insects.

We strive to achieve this by delivering innovative, science-based solutions that are not only effective but also sustainable.

What Sets Us Apart

Expertise

Our team consists of highly trained and skilled professionals who are passionate about pest control.

We stay ahead of the curve by continuously updating our knowledge and techniques to ensure we provide the best solutions and service for all our customers.

Comprehensive Solutions

Whether you're dealing with the common house fly or facing more complex challenges in a commercial setting, PestWest Australia has a solution for you.

We offer a comprehensive range of high-quality UV insect light traps tailored to your specific needs.

Eco-Friendly Practices

We prioritize the health and well-being of our customers, their families, and the environment.

Our commitment to sustainability is reflected in our use of eco-friendly products and practices that minimize the impact on the ecosystem while effectively controlling pests.

Customer-Centric Approach

Customer satisfaction is at the core of our business. We work closely with our clients to understand their specific concerns and develop flying insect solutions to suit their requirements.

Our responsive and friendly team is always ready to address your questions and provide ongoing support.

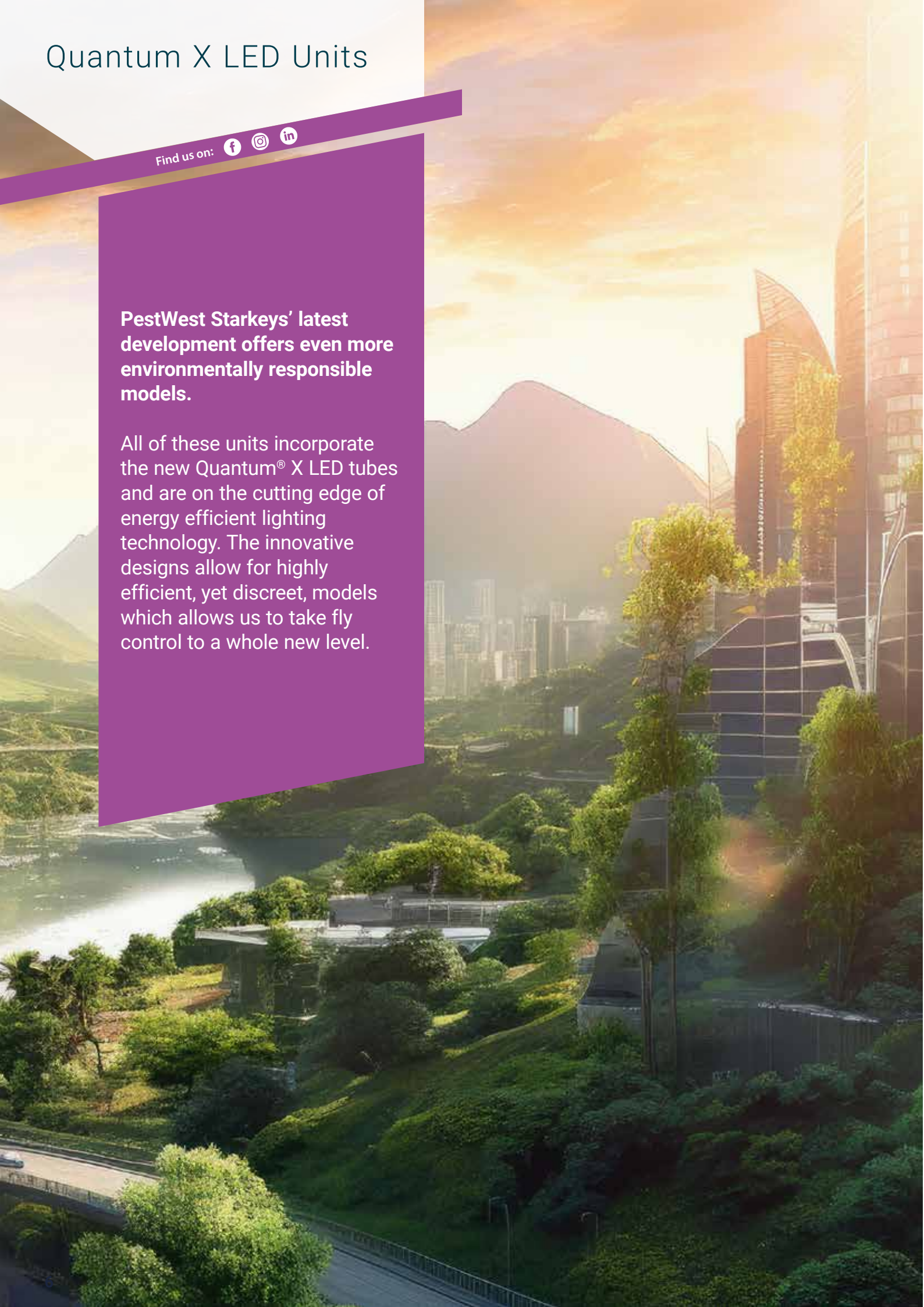
Quantum X LED Units

Find us on:



PestWest Starkeys' latest development offers even more environmentally responsible models.

All of these units incorporate the new Quantum® X LED tubes and are on the cutting edge of energy efficient lighting technology. The innovative designs allow for highly efficient, yet discreet, models which allows us to take fly control to a whole new level.



Quantum X LED Units

Find us on:



Chameleon® QUALIS



The revolutionary UV LED fly control unit the market has been waiting for!

- Lowest power consumption, consistent with superior flying insect attraction
- A bliss to service - LED tubes require replacement only once every 3 years
- PestWest® LED sticky board with specially formulated adhesive
- Full metal construction

DIMENSIONS

H:30cm W:57.5cm D:4cm

WEIGHT

3.6kg

COVERAGE

Wall mounted 90-120m2

FINISH

Stainless Steel White Coated Zintec Steel

TUBE DATA

- 2 x Quantum® X LED tubes
- Shatterproof coating with industry compliant FEP
- Powered by a state of the art LED driver

Quantum X LED Units



Find us on:



Chameleon® QUALIS IP

QUANTUM®
LED



The revolutionary UV LED fly control unit the market has been waiting for!

- Lowest power consumption, consistent with superior flying insect attraction
- A bliss to service - LED tubes require replacement only once every 3 years
- PestWest® LED sticky board with specially formulated adhesive
- Full metal construction

The Chameleon® Qualis IP unit offers advanced fly control for demanding environments and is suitable for areas that are steam-cleaned, hosed down and are damp or corrosive e.g. dairies, abattoirs and industrial kitchens. It is entirely made in stainless steel and IP66 certified.

DIMENSIONS

H:32cm W:64cm D:5cm

WEIGHT

5.6kg

COVERAGE

Wall mounted 90-120m²

FINISH

Stainless Steel 

TUBE DATA

- 2 x Quantum® X LED tubes
- Shatterproof coating with industry compliant FEP
- Powered by a state of the art LED driver

Quantum X LED Units

Find us on:



Chameleon[®] EXG



This custom-designed unit has been exclusively engineered to allow protection in areas where gas and vapour are present such as: distilleries and in the petrochemical and pharmaceutical industries.

Fitted with two Quantum X shatterproof tubes and the dedicated LED range glue board, the Chameleon[®] EXG X is made to comply with exacting ATEX standards (ATEX Directives 99/92/EC and 94/9/ EC) and is made from the highest quality materials to give a fully corrosion-resistant construction using 304-brushed stainless steel and Marine-grade aluminium alloy.

It is suitable for use in zones 2 and 1 - atmospheres where flammable gases/vapours are likely to arise and zones 22 and 21 - atmospheres where combustible dust/powder may be present.

DIMENSIONS

H: 81.5cm W: 94cm D: 18cm

WEIGHT

12kg

COVERAGE

Wall mounted: 120m²

FINISH

Stainless steel and aluminium alloy

TUBE DATA

- 2 x Quantum[®] X LED tubes
- Shatterproof coating with industry compliant FEP
- Powered by a state of the art LED driver



Confidence in
Fly Control

Quantum X LED Units

Find us on:



Chameleon®

QUANTUM
LED

SIRIUS

The Chameleon® Sirius X is the next generation fly control unit for sophisticated front-of-house use. Sticking to the clean and futuristic design of the Chameleon® Sirius, it will continue to blend in seamlessly into any restaurant, café or hotel.

Fitted with two Quantum X shatterproof tubes and the dedicated LED range glue board, the appealing unit helps to save energy and contributes to the wider mission of sustainability. Additionally, each centrally dividable replacement glue board gives two usages.

The Sirius X offers dual wall mounting options, either horizontally or vertically.



MADE IN UK



DIMENSIONS

H: 19cm W: 58cm D: 12cm

WEIGHT

3.1kg

COVERAGE

Wall mounted: 50-60m²

FINISH

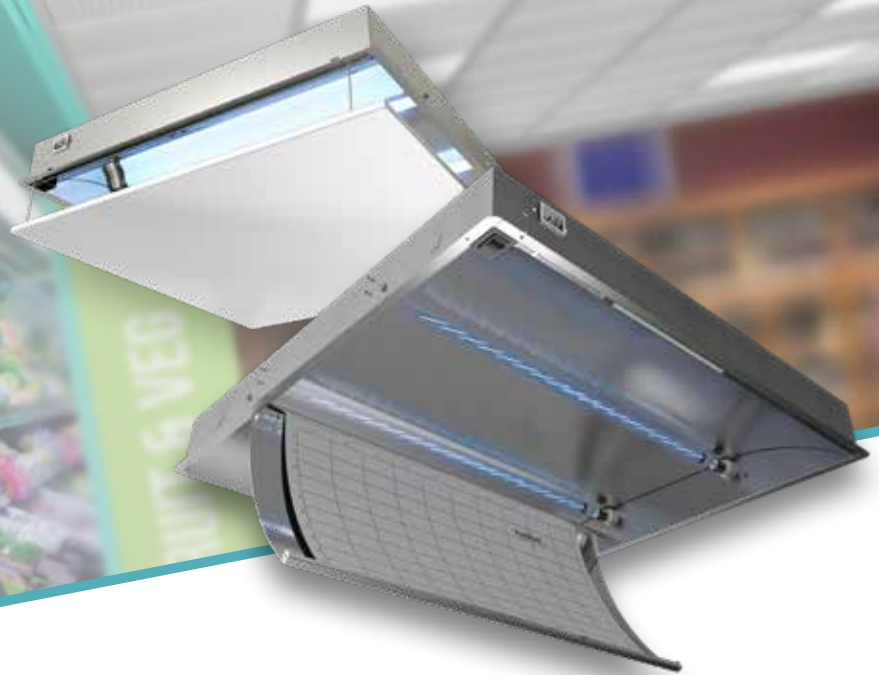
White Stainless Steel

TUBE DATA

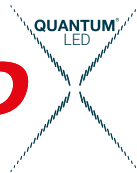
- 2 x Quantum® X LED tubes
- Shatterproof coating with industry compliant FEP
- Powered by a state of the art LED driver

Quantum X LED Units

Find us on:



ON-TOP **PRO**



ON-TOP **PRO2**



Innovative and discreet, the unique overhead design fits easily into new or existing suspended ceilings.

This discreet and stylish LED system is designed to be suspended ceiling installed. This patented concept offers an ideal solution for supermarkets, convenience stores, fast-food restaurants, and many others. The perfect solution to limited or no wall space.

The bodywork is a conformal zintec steel (rust-resistant) chassis. An exclusive polished aluminum reflector optimizes flying insect capture through LED UVA light specular reflection. The cover is brushed stainless steel.

The ON-TOP PRO2 X features a curved stainless steel front which holds the Quantum® X LED system glue board. The front easily pivots for convenient service and maintenance.

DIMENSIONS:

H: 59cm x W: 59cm x D: 7cm

WEIGHT: 5.6kg

COVERAGE: Ceiling fitted: 50-60m²

FINISH:

White Stainless Steel

TUBE DATA:

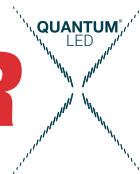
- 2 x Quantum® X LED tubes
- Shatterproof coating with industry compliant FEP
- Powered by a state of the art LED driver

Quantum X LED Units

Find us on:



INTERCEPTOR



Experience the future of Insect control with the newest innovative Electronic Insect Light Trap featuring two Quantum X LED tubes

Equipped with dual Quantum X shatterproof tubes and a stainless steel grill, this attractive fixture not only conserves energy but also aligns with the broader goal of sustainability. The Interceptor provides wallmounting capabilities, making it ideal for various settings such as supermarket delivery zones, warehouses, factories, or indoor open areas.

DIMENSIONS

H: 35.5cm W: 58cm D: 8.5cm

WEIGHT

7.2kg

COVERAGE

Wall mounted: 90-120m²

FINISH

White Stainless Steel

TUBE DATA

- 2 x Quantum X LED tubes
- Shatterproof coating with industry compliant FEP

Quantum X LED Units

Find us on:



Chameleon®

STELLARIS



A unique double-sided LED UV fly control unit for large, open industrial areas.

The patent pending design maximises the 360° UV output of the Quantum® X LED technology to increase energy savings and reduce consumables with no compromise on fly control performance. The Chameleon Stellaris consumes 6 times less than its equivalent Chameleon model with fluorescent tubes and 3 times less than most other LED suspended models with a similar coverage area. Its full metal construction further reduces the environmental impact.

The servicing is fast and easy with direct access to consumables, notably the lateral insertion and withdrawal of the LED optimised glue boards.

DIMENSIONS:

H: 42cm W: 59cm D: 16cm

WEIGHT:

5.7kg

COVERAGE:

180-220m²

FINISH:

White Stainless Steel

TUBE DATA:

- 2x Quantum® X LED tubes
- Shatterproof coating with industry compliant FEP
- Powered by a state of the art LED driver



Confidence in
Fly Control

QBL Retrofit LED Units

Find us on:



Introducing the QBL Retrofit LED range by PestWest – units upgraded with cutting-edge LED technology!

With these units, you gain the advantages of LED technology, including a lifespan of 3 years, power efficiency, and cost savings. LEDs are environmentally friendly as they consume less energy, contain no toxic materials like mercury found in fluorescent lights, and are recyclable. Overall, LED units represent a modern and sustainable lighting choice that offers economic, environmental, and operational advantages for various applications.

Good to know: With QBL Retrofit LED tubes, you have the flexibility to transform all your 15-watt fluorescent units to LED units.



QBL Retrofit LED Units

Find us on:



Boab™ Webtrap QBL LED



A classic unit, just upgraded
with QBL LED technology!

Discreetly concealing the catch, this unit is ideal for front-of-house areas such as restaurants, cafes, food halls and large domestic kitchens.

DIMENSIONS

H: 42cm W: 60cm D: 10cm

WEIGHT

5kg

COVERAGE

Wall mounted 120m²

FINISH

White

TUBE DATA

• 3 x QBL LED tubes



Confidence in
Fly Control

QBL Retrofit LED Units

Find us on:



Chameleon® Uplight QBL LED



Attractive wall-mounted unit disguised as a wall light. It is the perfect choice for areas where fly control should be discreet, e.g. restaurants and other eating areas.

Disguised as a wall sconce, the Chameleon® Uplight QBL LED is easily mounted on the wall for years of reliable service. The front cover can be painted or decorated to match existing decor.

DIMENSIONS

H: 21cm W: 47cm D: 17cm

WEIGHT

3.7kg

COVERAGE

Wall mounted: 40m²

FINISH

Charcoal Grey White

TUBE DATA

• 1x QBL LED tube

Professional Sticky Traps

Find us on:



Our Professional Sticky Traps are high quality units combining advanced glue board technology with slim-line designs.

They catch insects securely allowing units to be placed closer to sensitive areas. They do not have an electric killing grid making them silent, discreet and hygienic whilst catching all sizes of insects including smaller species such as Fruit Flies. Their consumables can easily and quickly be accessed without the need for a tool.



Chameleon® 1x2



Attractive, slim, wall-mounted (free standing bracket available), compact and unobtrusive, this unit is ideal for use in food preparation areas.

Chameleon® 1x2 units are ultra-slim, easy to maintain, compact and unobtrusive and only require a periodical change of glue boards and an annual tube replacement to maintain optimum performance.

With the Chameleon® 1x2, insects are caught cleanly and safely onto the glue board. No noise, no smell, no problem. This allows the equipment to be placed closer to sensitive areas.

Chameleon® units from this range use interchangeable tubes and sticky boards to minimise stocking requirements.

DIMENSIONS

H: 31.5cm W: 48.5cm D: 6.5cm

WEIGHT

4.3kg

COVERAGE

Wall mounted / Freestanding: 90m²

FINISH

Stainless Steel

White

TUBE DATA

- 2 x 15-Watt PestWest Quantum® tubes
- Shatterproof coating with industry compliant FEP
- Reflectobakt® technology

OPTIONAL: QBL RETROFIT LED TUBES SUITABLE

- 3 year lifespan
- Power efficiency
- Environmentally friendly

Professional Sticky Traps

Find us on:



Chameleon® 1x2 DISCRETION



Discreet and slim wall-mounted unit.

An attractive front cover conceals the sticky board and catch, which makes this unit ideal for areas in view of the public.

This Chameleon® 1x2 Discretion offers very similar features as the standard 1x2, but with added discretion.

(free-standing bracket available).

DIMENSIONS

H: 31.5cm W: 48.5cm D: 6.5cm

WEIGHT

4.3kg

COVERAGE

Wall mounted / Freestanding: 70m²

FINISH

Stainless Steel



White



TUBE DATA

- 2 x 15-Watt PestWest Quantum® tubes
- Shatterproof coating with industry compliant FEP
- Reflectobakt® technology

OPTIONAL: QBL RETROFIT LED TUBES SUITABLE

- 3 year lifespan
- Power efficiency
- Environmentally friendly

Professional Sticky Traps

Find us on:



Chameleon® 2x2



Designed to be ceiling-suspended, this model provides double sided attraction and is ideal for industrial and commercial food premises.

Populations of smaller flies are on the increase, putting jobs and reputations on the line. The double sided Chameleon® 2x2 protects large open areas and catches all sizes of flies, especially the smaller ones that may be missed by traditional fly units.

Chameleon® units from this range use interchangeable tubes and sticky boards to minimise stocking requirements.

DIMENSIONS

H: 31.5cm W: 48.5cm D: 12.5cm

WEIGHT

6kg

COVERAGE

Ceiling-suspended / Freestanding: 180m²

FINISH

Stainless Steel

White



TUBE DATA

- 4 x 15-Watt PestWest Quantum® tubes
- Shatterproof coating with industry compliant FEP
- Reflectobakt® technology

OPTIONAL: QBL RETROFIT LED TUBES SUITABLE

- 3 year lifespan
- Power efficiency
- Environmentally friendly

Find us on:



Chameleon® VEGA

The Chameleon® Vega is powerful, stylish and economical.

Its elegant and ultra-slim design, based on revolutionary new technology, combined with an all stainless steel or white all metal construction will suit most environments.

It features new higher energy efficient UVA tubes with Reflectobakt® technology powered by a state of the art electronic ballast to deliver efficient fly control with low running costs. The slimness and style of the Chameleon® Vega is achieved thanks to the latest generation of UVA tubes, which offers improved UVA performance as well as a reduction in glass content.

DIMENSIONS

H: 30cm W: 57cm D: 4cm

WEIGHT

3.2kg

COVERAGE

Wall mounted: 150m²

FINISH

Stainless Steel



White



TUBE DATA

- 3 x 14-Watt T5 PestWest Quantum® tubes
- Shatterproof coating with industry compliant FEP
- Reflectobakt® technology
- Powered by an electronic ballast



Find us on:



Boab™ FT60 Sticky Trap



Versatility enables you to use it in both a single sided or double sided configuration depending on its location.

Ideal for use in restaurant kitchens, cafés and food halls.

DIMENSIONS

H: 41cm W: 44cm D: 43cm

WEIGHT

6kg

COVERAGE

Suspended / Double sided: 360m² - Single sided: 180m²

FINISH

Stainless Steel



White



TUBE DATA

- 4 x 15-Watt PestWest Quantum® tubes
- Shatterproof coating with industry compliant FEP

OPTIONAL: QBL RETROFIT LED TUBES SUITABLE

- 3 year lifespan
- Power efficiency
- Environmentally friendly

Professional Sticky Traps

Find us on:



Boab™ FT80 Sticky Trap



This unique design provides high coverage and excellent control, giving you the results that you can trust.

Ideal for use in large restaurant and hospital kitchens, cafés and food halls.

DIMENSIONS

H: 67cm W: 10cm D: 50cm

WEIGHT

8.5kg

COVERAGE

Suspended / Double sided: 400m² - Single sided: 200m²

FINISH

Stainless Steel



White



TUBE DATA

- 4 x 18-Watt PestWest Quantum® tubes
- Shatterproof coating with industry compliant FEP

Find us on:   

The decorative and commercial sticky trap units have been designed specifically for areas where fly control should be hidden from view, with decorative and unique front covers that hide the glue board and insect catch.

Decorative Sticky Traps

Find us on:



Designed for front-of-house areas where fly control should be hidden from view, the elegant and decorative design of the Sunburst® conceal the glue board and the insects caught.

Discreet, stylish and environmentally responsible, the Sunburst® is ideal for hotels, restaurants, bars, and retail shops. These all metal units can be placed on a tabletop or mounted on the wall.

DIMENSIONS

Sunburst: H: 31cm W: 23cm D: 10cm

WEIGHT

2kg

COVERAGE

Wall mounted / Freestanding: 35m²

FINISH

White Silver-grey Black

TUBE DATA

- 1 x 20-Watt UV light compact tube
- Powered by an electronic ballast

Find us on:



KAKADU™ DECORE Sticky Trap



Featuring a UV resistant ABS shell, this lightweight upright is cleverly designed to hide the trapped insects from view, while still offering maximum attraction.

Both practical and designed to blend into almost any environment, this glue board unit will not be out of place in fast food outlets, public dining areas, offices, or supermarkets.

DIMENSIONS

H: 25cm W: 50cm D: 12cm

WEIGHT

2.5kg

COVERAGE

Wall mounted / Freestanding: 90m²

FINISH

Cream  Black 

TUBE DATA

- 2 x 15-Watt PestWest Quantum® tubes
- Shatterproof coating with industry compliant FEP

OPTIONAL: QBL RETROFIT LED TUBES SUITABLE

- 3 year lifespan
- Power efficiency
- Environmentally friendly

Decorative Sticky Traps

Find us on:



KAKADU™ ABSOLUTE Sticky Trap



Stylish, discreet and effective.

The Absolute provides unnoticed control, fitting seamlessly in front of house hotel, up market cafes, bars, and any other environment where aesthetics are important.

DIMENSIONS

H: 14cm W: 49cm D: 16cm

WEIGHT

2.1kg

COVERAGE

Wall mounted / Freestanding: 90m²

FINISH

White

TUBE DATA

• 1 x 40-Watt Compact tube

Professional Electronic Fly Killers

Find us on:



The Electronic Fly Killers use powerful tubes to attract flying insects onto a high voltage killing grid to eradicate them. The insects subsequently fall into a catch-tray.

They are designed with both the professional technician and the end-user in mind.

They combine robust and powerful designs with a choice of either wall-mounted, ceiling-suspended or freestanding installations.

Find us on:



ECHIDNA™ DS115 Insect Killer



The high quality zinc-anneal construction and easy to remove catching tray makes this unit ideal for domestic use and smaller areas.

Light weight, easy to install and low maintenance.

DIMENSIONS

H: 25cm W: 51.5cm D: 16cm

WEIGHT

5kg

COVERAGE

Wall mounted: 45m² / Freestanding: 90m²

FINISH

White Black

TUBE DATA

- 1 x 15-Watt PestWest Quantum® tubes
- Shatterproof coating with industry compliant FEP

OPTIONAL: QBL RETROFIT LED TUBES SUITABLE

- 3 year lifespan
- Power efficiency
- Environmentally friendly

Professional Electronic Fly Killers

Find us on:



ECHIDNA™ DS120 Insect Killer



Comes with high quality zinc-anneal construction and easy to remove catching tray.

This powerful yet compact model is ideal for domestic use and smaller areas. Light weight, easy to install and low maintenance.

DIMENSIONS

H: 35cm W: 27cm D: 15cm

WEIGHT

4kg

COVERAGE

Wall mounted: 60m² Freestanding: 100m²

FINISH

White

Black

TUBE DATA

1 x 20-Watt UV light compact tube

Professional Electronic Fly Killers

Find us on:



ECHIDNA™ DS215 Insect Killer



The DS 215 has stood the test of time and remains one of our most popular models.

The simple yet highly effective double-sided design works exceptionally well in most indoor environments where flying insects are a problem. A unit that offers multiple mounting options, low maintenance, and built to last.

DIMENSIONS

H: 35cm W: 48cm D: 15cm

WEIGHT

6kg

COVERAGE

Wall mounted: 90m²

Suspended / Freestanding: 180m²

FINISH

Stainless Steel



White



Black



TUBE DATA

- 2 x 15-Watt PestWest Quantum® tubes
- Shatterproof coating with industry compliant FEP

OPTIONAL: QBL RETROFIT LED TUBES SUITABLE

- 3 year lifespan
- Power efficiency
- Environmentally friendly

Professional Electronic Fly Killers

Find us on:



ECHIDNA™ DS220 Insect Killer



With this large killing grid you can be sure to get the best results.

This unit is typically suited for use in supermarket delivery areas, large warehouses, factories or most large indoor open spaces.

DIMENSIONS

H: 51cm W: 64cm D: 58cm

WEIGHT

9kg

COVERAGE

Wall mounted: 150m²

Suspended / Freestanding: 250m²

FINISH

Stainless Steel



White



TUBE DATA

- 2 x 18-Watt PestWest Quantum® tubes
- Shatterproof coating with industry compliant FEP



ECHIDNA™ DS415 Insect Killer



Combining power with quality, this robust killing grid unit is designed to catch even the smallest of insects.

This unit is typically suited for use in supermarket delivery areas, large warehouses, factories or most large indoor open spaces.

DIMENSIONS

H: 35cm W: 48cm D: 15cm

WEIGHT

7kg

COVERAGE

Wall mounted: 180m²

Suspended / Freestanding: 360m²

FINISH

Stainless steel



White



TUBE DATA

- 4 x 15-Watt PestWest Quantum® tubes
- Shatterproof coating with industry compliant FEP

OPTIONAL: QBL RETROFIT LED TUBES SUITABLE

- 3 year lifespan
- Power efficiency
- Environmentally friendly

Find us on:



ECHIDNA™ DS420 Insect Killer



Big brother to the DS220, this is another unit in our range that offers uncompromising performance, tested and proven design, and hand built using quality materials that will last - even the most demanding environments.

This unit is typically suited for use in supermarket delivery areas, large warehouses, factories or most large indoor open spaces.

DIMENSIONS

H: 51cm W: 64cm D: 15cm

WEIGHT

9.5kg

COVERAGE

Wall mounted: 200m²

Suspended / Freestanding: 400m²

FINISH

Stainless steel



White



TUBE DATA

- 4 x 18-Watt PestWest Quantum® tubes
- Shatterproof coating with industry compliant FEP

Outdoor Electronic Fly Killers

Find us on:   

This range of outdoor electronic fly killers provides robust protection for outdoor areas, ensuring catering and dining spaces remain free from flying insects.

Utilising powerful PestWest Quantum tubes, these devices effectively attract flying insects to a high-voltage killing grid, ensuring their swift eradication.

Find us on:



KELPIE™ L25 Insect Killer



Obliteration of annoying flying insects is what we had in mind when this versatile outdoor model was first put into production.

The bespoke UV resistant ABS lid and solid metal basket are the perfect combination of materials to give you safety, piece of mind and longevity with this unit that delivers 360° attraction.

- Splash resistant to liquid from all directions.
- All-around and environmentally responsible insect attraction with no pesticide and no risk of chemical resistance.

DIMENSIONS

H: 35cm W: 25cm D: 25cm

WEIGHT

4.1kg

COVERAGE

Suspended / Freestanding: 300m²

FINISH

Stainless steel



Black



TUBE DATA

- 1 x 25w Starkeys compact tube
- IP Rating - IPX4

Outdoor Electronic Fly Killers

Find us on:



KELPIE™ L40 Insect Killer



Easy to install and with low running costs.

This weatherproof design is perfect for use in outdoor patio and BBQ areas. Both robust and strong its performance cannot be challenged.

- Splash resistant to liquid from all directions.
- All-around and environmentally responsible insect attraction with no pesticide and no risk of insects building up chemical resistance.

DIMENSIONS

H: 47cm W: 30cm D: 30cm

WEIGHT

4.9kg

COVERAGE

Suspended / Freestanding: 550m²

FINISH

Black 

TUBE DATA

- 1 x 40w Starkeys compact tube
- IP Rating - IPX4

Outdoor Electronic Fly Killers

Find us on:



KELPIE™ LP440 Insect Killer



An outdoor light with the strength to reassure you that your livestock will not be bothered by flying insects.

This robust weatherproof design is ideal to provide coverage in livestock ships, horticultural settings, agricultural farms and parks.

- Splash resistant to liquid from all directions.

DIMENSIONS

H: 71cm W: 52cm D: 52cm

WEIGHT

17kg

COVERAGE

Wall mounted / Freestanding: 2000m²

FINISH

White

TUBE DATA

- 4 x 40w Starkeys compact tube
- IP Rating - Splash proof rated to IPX4

Outdoor Electronic Fly Killers

Find us on:



KELPIE™ SPG160 Insect Killer



The “Big Boy” is the largest flying insect trap available, and the first choice to many mine sites, camping areas, and public open spaces around the globe.

The solid construction and size alone should be enough to scare even the most tenacious of flying bugs away. But to be sure we have built our tried and proven design and technology into the DNA of the SPG160 to ensure that it delivers on execution and durability.

DIMENSIONS

H: 168cm W: 81cm D: 58cm

WEIGHT

90kg

COVERAGE

Freestanding: 3500m²

FINISH

Black



Green



TUBE DATA

- 8 x 18 Watt PestWest Quantum® tubes
- Shatterproof coating with industry compliant FEP

Outdoor Electronic Fly Killers

Find us on:



KELPIE™ BALI Lantern

Outdoor Electric Insect Killer

Featuring an attractive timber frame, the tropical islands of Indonesia influenced this design.

Not only does this innovative concept offer 360° attraction but also offers additional pathway lighting. Like all products in our range this elegant unit is built to last while delivering superior efficacy.



DIMENSIONS

H: 82cm W: 55cm D: 55cm

WEIGHT

23kg

COVERAGE

Freestanding: 1000m²

FINISH

Wooden frame and top



TUBE DATA

• 2 x 40w Starkeys compact tube

Find us on:



The specialist range provides special safety features such as high IP ratings and flameproof electrical enclosures giving you protection against the most hazardous and potentially dangerous areas.

The units are built to the highest possible specifications and accredited to the ultimate safety certification for electrical equipment.

This means that sensitive and often highly dangerous areas (ATEX classified zones) can be protected without compromising safety standards or insurance requirements.

Find us on:



Nemesis[®] QUATTRO IP

The Nemesis Quattro IP24 is an all stainless steel industrial model, which can withstand exposure to high humidity, water splashes and corrosive atmospheres.

It is both powerful and energy efficient, featuring new high efficiency UVA tubes powered by a state of the art electronic ballast for optimum fly control performance with low running costs and reduced materials (glass and mercury notably). It is equipped with 'power-on' and high voltage LED indicators, the killing grid is extractable and the front guard can be locked in open position, which all contribute to the overall ease of servicing.

DIMENSIONS

H: 42cm W: 65cm D: 18cm

WEIGHT

12kg

COVERAGE

Wall mounted: 240m² / Ceiling suspended: 480m²

FINISH

Stainless steel 

TUBE DATA

- 4 x 14-Watt PestWest Quantum[®] tubes
- Shatterproof coating with industry compliant FEP
- Powered by an electronic ballast
- IP Rating - IP24 certified



Chameleon® 4x4

The Chameleon® 4x4 is a powerful sticky trap, particularly suited for industrial food premises.

An advanced electronic ballast circuitry reduces the running costs and increases efficiency.

Chameleon® 4x4 EX

The Chameleon® 4x4 EX is an ATEX compliant all stainless steel industrial UV fly trap.

It is suitable for use in potentially explosive atmospheres in ATEX zone 22 classified areas. Its IP65 rating also allows installation in damp, dusty or corrosive environments. This powerful unit covers large industrial areas trapping even the smallest insects on its double-sided board.

DIMENSIONS

H: 61.5cm W: 63.5cm D: 16.5cm

WEIGHT

4x4: 11.75kg / 4x4EX: 15.5kg

COVERAGE

Ceiling suspended: 440m²

FINISH

4x4 White 4x4EX Stainless steel

TUBE DATA

- 4 x 40-Watt PestWest Quantum® tubes
- Shatterproof coating with industry compliant FEP
- Reflectobakt® technology
- Powered by an electronic ballast
- IP Rating - Chameleon® 4X4EX: IP65

Find us on:



flyDetect® from PestWest®, the industry leader in online flying insect monitoring.

- 24/7 remote monitoring system.
- Immediate notification of emerging pest infestations.
- Customisable alert levels.
- Built-in high resolution camera captures the entire sticky board.
- Set up and monitor multiple clients.
- Temperature and humidity are recorded alongside each image.
- Scheduled UV-A tube and sticky board change notifications.
- Multiple connectivity options (Wifi, Ethernet and Cellular).
- The flyDetect® app is available on multiple platforms (smartphones and computers).

DIMENSIONS

H: 22cm W: 59.5cm D: 15cm

WEIGHT

4.5kg

COVERAGE

Wall mounted: 70m²

FINISH

Black



TUBE DATA

- 2 x 15-Watt PestWest Quantum® tubes
- Shatterproof coating with industry compliant FEP

OPTIONAL: QBL RETROFIT LED TUBES SUITABLE

- 3 year lifespan
- Power efficiency
- Environmentally friendly

Find us on:



Each of our products are designed and built to last. We offer a wide range of high quality ancillary products to keep your insect light traps at optimum performance and efficacy at all times.



Find us on:   



Tubes



Outrigger



Starter



Sticky Pads



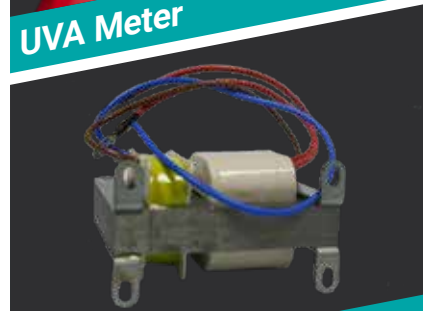
Guard



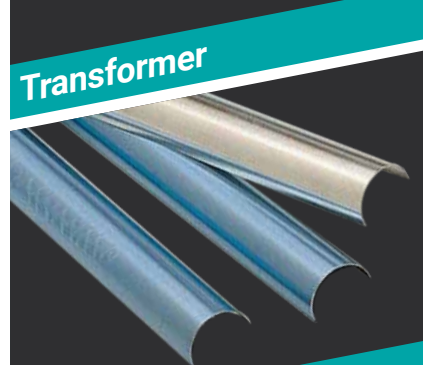
Ballast



UVA Meter



Transformer



Reflektobakt®



Catching Tray

Find us on:



Our high quality insect control units can be customised to match your décor or to feature your branding.

Minimum order quantity applies to customised units.

**For more Information call us
or send us an Email**

UV fly killers

- To maintain maximum effectiveness, tubes should be changed at least every 12 months, preferably at the onset of warmer weather.
- Quantum® tubes are recommended, as their effective lifespan is longer than most other tubes, which reduces the amount of maintenance required.
- Use a UV-A Meter to measure the ultra-violet output of tubes, to give you an instant indication of tube effectiveness and their remaining life.
- If the unit requires starters, replace them at the same time that you change the tubes.



Additionally for UV sticky traps

- Use Reflectobakt® sleeves to maintain optimum fly control performance particularly when the glue board and the tubes are placed close together.
- Replace the sticky boards every 2 months to ensure maximum efficacy.

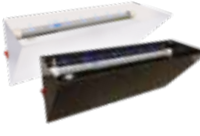
Additionally for Electronic Fly Killers (EFKs)

- Use a grid tester to test the killing grid without shorting the high tension current onto the metal body of the machine, as often happens when using a conventional screwdriver (unless the unit has a high voltage 'grid-on' indicator like the Nemesis Quattro line).
- Brush down the killing grid (only when it is turned off!) to remove insect fragments.
- Empty the catch tray frequently.



Quick View

Chameleon® Qualis LED		Page 07
	Dimensions	H: 30cm W: 57.5cm D: 4cm
	Weight	3.6kg
	Coverage	90-120m ²
	Finish	Stainless steel / White
	Tubes	2 x Quantum® X LED

Chameleon® Uplight QBL LED		Page 16
	Dimensions	H: 21cm W: 47cm D: 17cm
	Weight	3.7kg
	Coverage	40m ²
	Finish	White / Charcoal Grey
	Tubes	1 x QBL LED tubes

Chameleon® Qualis IP		Page 08
	Dimensions	H: 32cm W: 64cm D: 5cm
	Weight	5kg
	Coverage	90-120m ²
	Finish	Stainless steel
	Tubes	2 x Quantum® X LED tubes

Chameleon® 1x2		Page 18
	Dimensions	H: 31.5cm W: 48.5cm D: 6.5cm
	Weight	4.3kg
	Coverage	90m ²
	Finish	Stainless steel / White
	Tubes	2 x 15 Watt Quantum®

Chameleon® EXG X		Page 09
	Dimensions	H: 81.5cm W: 94cm D: 18cm
	Weight	12kg
	Coverage	Wall mounted: 120m ²
	Finish	Stainless steel and aluminium alloy
	Tubes	2x Quantum® X LED tubes

Chameleon® 1x2 Discretion		Page 19
	Dimensions	H: 31.5cm W: 48.5cm D: 6.5cm
	Weight	4.3kg
	Coverage	70m ²
	Finish	Stainless steel / White
	Tubes	2 x 15 Watt Quantum®

Chameleon® Sirius X		Page 10
	Dimensions	H: 19cm W: 58cm D: 12cm
	Weight	3.1kg
	Coverage	Wall mounted: 50-60m ²
	Finish	Stainless steel / White
	Tubes	2 x Quantum® X LED tubes


Chameleon® 2x2		Page 20
	Dimensions	H: 31.5cm W: 48.5cm D: 12.5cm
	Weight	6kg
	Coverage	180m ²
	Finish	Stainless steel / White
	Tubes	4 x 15 Watt Quantum®

On Top Pro X		Page 11
	Dimensions	H: 59cm W: 59cm D: 15cm
	Weight	5.6kg
	Coverage	Ceiling Recessed: 50-60m ²
	Finish	White
	Tubes	2 x Quantum® X LED tubes


Chameleon® Vega		Page 21
	Dimensions	H: 30cm W: 57cm D: 4cm
	Weight	3.2kg
	Coverage	150m ²
	Finish	Stainless steel / White
	Tubes	3 x 14 Watt T5 Quantum®


On Top Pro2 X		Page 11
	Dimensions	H: 59cm W: 59cm D: 7cm
	Weight	5.6kg
	Coverage	Ceiling Recessed: 50-60m ²
	Finish	Stainless steel
	Tubes	2 x Quantum® X LED tubes

Boab® FT 60 Sticky Trap		Page 22
	Dimensions	H: 41cm W: 44cm D: 43cm
	Weight	6.5kg
	Coverage	Double sided 360m ² / Single sided 180m ²
	Finish	Stainless steel / White
	Tubes	4 x 15 Watt Quantum®


Interceptor		Page 12
	Dimensions	H: 35.5cm / W 58cm / D 8.5cm
	Weight	7.2kg
	Coverage	Wall mounted: 90-120m ²
	Finish	Charcoal Grey / White
	Tubes	2 x Quantum® X LED tubes

Boab® FT 80 Sticky Trap		Page 23
	Dimensions	H: 67cm W: 10cm D: 50cm
	Weight	9.4kg
	Coverage	Double sided 400m ² / Single sided 200m ²
	Finish	Stainless steel / White
	Tubes	4 x 18 Watt Quantum®

Chameleon® Stellaris X		Page 13
	Dimensions	H: 42cm W: 59cm D: 16cm
	Weight	5.7kg
	Coverage	Ceiling Suspended: 180-220m ²
	Finish	Stainless steel / White
	Tubes	2x Quantum® X LED tubes

Sunburst®		Page 25
	Dimensions	H: 31cm W: 23cm D: 10cm
	Weight	2kg
	Coverage	Wall mounted/freestanding: 35m ²
	Finish	White / Silver-Grey / Black
	Tubes	1 x 20 Watt UV light compact tube

Webtrap QBL LED		Page 15
	Dimensions	H: 42cm W: 60cm D: 10cm
	Weight	5kg
	Coverage	Wall mounted: 90-120m ²
	Finish	White
	Tubes	3 x QBL LED tubes

Kakadu® Decore Sticky Trap		Page 26
	Dimensions	H: 25cm W: 50cm D: 12cm
	Weight	2.5kg
	Coverage	90m ²
	Finish	Cream / Black
	Tubes	2 x 15 Watt Quantum®


Quick View


Kakadu® Absolute Sticky Trap		Page 27
	Dimensions	H: 14cm W: 49cm D: 16cm
	Weight	2.1kg
	Coverage	90m ²
	Finish	White
	Tubes	1 x 40 Watt compact tube


Echidna® DS115 Insect Killer		Page 29
	Dimensions	H: 25cm W: 51.5cm D: 16cm
	Weight	5kg
	Coverage	Wall mount 45m ² / Standing 90m ²
	Finish	Black / White
	Tubes	1 x 15 Watt Quantum®

Echidna® DS120 Insect Killer		Page 30
	Dimensions	H: 35cm W: 27cm D: 15cm
	Weight	4kg
	Coverage	Wall mount 60m ² / Standing 100m ²
	Finish	Black / White
	Tubes	1 x 20 Watt UV light compact tube

Echidna® DS215 Insect Killer		Page 31
	Dimensions	H: 35cm W: 48cm D: 15cm
	Weight	6kg
	Coverage	Wall mount 90m ² / Standing 180m ²
	Finish	Stainless steel / White / Black
	Tubes	2 x 15 Watt Quantum®

Echidna® DS220 Insect Killer		Page 32
	Dimensions	H: 51cm W: 64cm D: 58cm
	Weight	9.1kg
	Coverage	Wall mount 150m ² / Standing 250m ²
	Finish	Stainless steel / White
	Tubes	2 x 18 Watt Quantum®

Echidna® DS415 Insect Killer		Page 33
	Dimensions	H: 35cm W: 48cm D: 15cm
	Weight	6.8kg
	Coverage	Wall mount 180m ² / Standing 360m ²
	Finish	Stainless steel / White
	Tubes	4 x 15 Watt Quantum®

Echidna® DS420 Insect Killer		Page 34
	Dimensions	H: 51cm W: 64cm D: 15cm
	Weight	9.1kg
	Coverage	Wall mount 200m ² / Standing 400m ²
	Finish	Stainless steel / White
	Tubes	4 x 18 Watt Quantum®

Kelpie® L25 Insect Killer		Page 36
	Dimensions	H: 35cm W: 25cm D: 25cm
	Weight	3.65kg
	Coverage	300m ²
	Finish	Stainless steel / Black
	Tubes	1 x 25w Compact tube

Kelpie® L40 Insect Killer		Page 37
	Dimensions	H: 47cm W: 30cm D: 30cm
	Weight	5.05kg
	Coverage	550m ²
	Finish	Black
	Tubes	1 x 40w Compact tube

Kelpie® LP440 Insect Killer		Page 38
	Dimensions	H: 71cm W: 52cm D: 52cm
	Weight	17kg
	Coverage	2000m ²
	Finish	White
	Tubes	4 x 40w Compact tube

Kelpie® SPG160 Insect Killer		Page 39
	Dimensions	H: 168cm W: 81cm D: 58cm
	Weight	90kg
	Coverage	3500m ²
	Finish	Black / Green
	Tubes	8 x 18 Watt Quantum®

Kelpie® Bali Style Lantern		Page 40
	Dimensions	H: 82cm W: 55cm D: 55cm
	Weight	23kg
	Coverage	1000m ²
	Finish	Wooden frame and top
	Tubes	2 x 40 Watt compact tube

Nemesis® Quattro IP		Page 42
	Dimensions	H: 42cm W: 65cm D: 18cm
	Weight	12kg
	Coverage	Wall mount 240m ² / Suspended 480m ²
	Finish	Stainless steel
	Tubes	4 x 14 Watt Quantum®

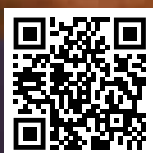
Chameleon® 4x4		Page 43
	Dimensions	H: 61.5cm W: 63.5cm D: 16.5cm
	Weight	11.75kg
	Coverage	440m ²
	Finish	White
	Tubes	4 x 40 Watt Quantum®

Chameleon® 4x4 EX		Page 43
	Dimensions	H: 61.5cm W: 63.5cm D: 16.5cm
	Weight	15.5kg
	Coverage	440m ²
	Finish	Stainless steel
	Tubes	4 x 40 Watt Quantum®

flyDetect®		Page 44
	Dimensions	H: 22cm W: 59.5cm D: 15cm
	Weight	4.5kg
	Coverage	70m ²
	Finish	Black
	Tubes	2 x 15 Watt Quantum®



PestWest[®]
www.pestwest.com



PestWest® Australia
4 Tesla Link, Wangara, Perth, W.A 6065
Office: +61 (8) 9302 2088
email: info@pestwest.com.au
www.pestwest.com.au

Confidence in
Fly Control